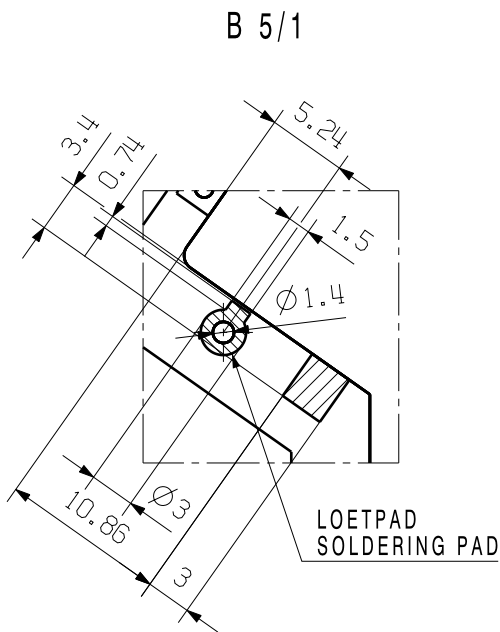
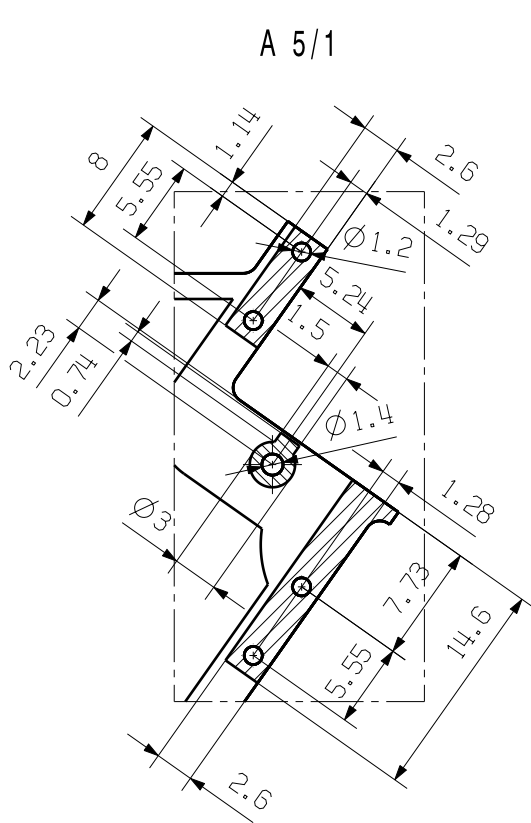
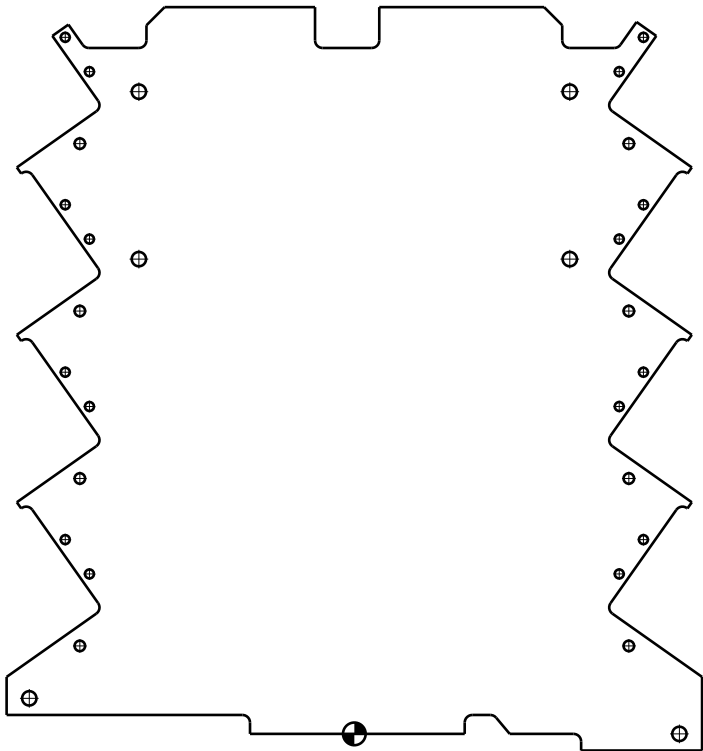
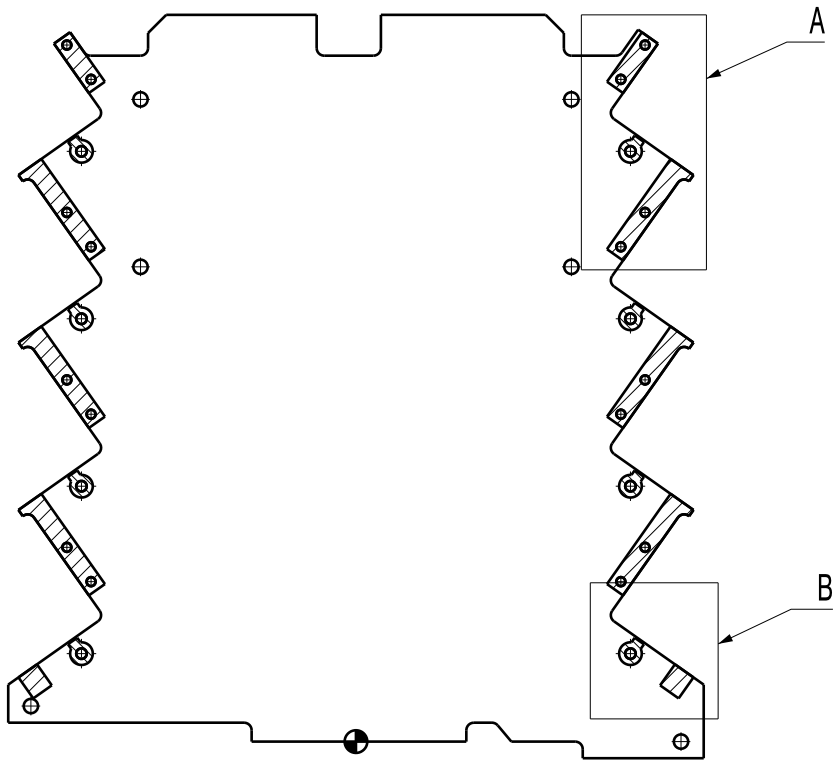


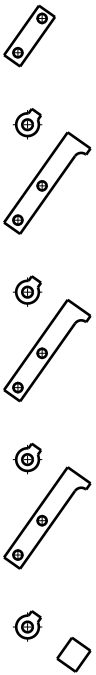
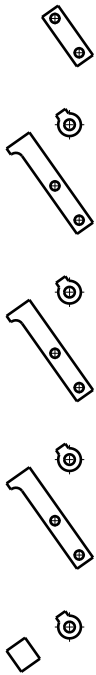
WEITERGABE SOWIE Vervielfältigung dieses Dokuments, Verwertung und Mitteilung seines Inhalts sind verboten, soweit nicht ausdrücklich gestattet.
Zu widerhandlungen verpflichten zu Schadenersatz. Alle Rechte für den Fall der Patent-, Gebrauchsmuster- oder Geschmacksunterzeichnung vorbehalten.
THE REPRODUCTION, DISTRIBUTION AND UTILIZATION OF THIS DOCUMENT AS WELL AS THE COMMUNICATION OF ITS CONTENTS TO OTHERS WITHOUT EXPLICIT AUTHORIZATION IS PROHIBITED.
OFFENDERS WILL BE HELD LIABLE FOR THE PAYMENT OF DAMAGES. WEIDMÜLLER EXCLUSIVELY RESERVES THE RIGHT TO FILE FOR PATENTS, UTILITY MODELS OR DESIGNS.

© WEIDMÜLLER INTERFACE GmbH & Co.KG

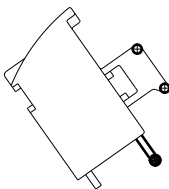
DIE DEUTSCHE VERSION IST VERBINDLICH
THE GERMAN VERSION IS BINDING



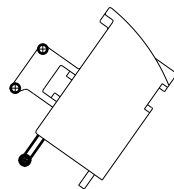
SPERRFLAECH FÜR ANSCHLUESSE
NON-USABLE AREA FOR TERMINALS



BAUTEILE-DEFINITION
DEFINITION OF COMPONENT

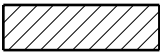


04

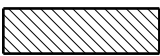


LHZ-SMT L 1.5SN BK ...

LHZ-SMT R 1.5SN BK ...



SPERRFLAECH
NON-USABLE AREA



SPERRFLAECH, AUSGENOMMEN LEITERBAHNEN
NON-USABLE AREA, EXCEPT PCB TRACKS

MATERIAL:

PART NO.:

MAT.NO.:

CAT.NO.:

FINISH TO WN 2 11 001 -

FINISH:ELECTROPLATED

SURFACE AREA: . mm²

GENERAL TOLERANCES:

TOLERANCES TO ISO 8015

WN 2 12 010

ISO 2768-f

3 50664

04

Weidmüller

DRAWING NO.

ISSUE NO.

SHEET 02

OF 05 SHEETS

MODIFICATION

DATE

NAME

DRAWN

17.07.2009

SEIDEL_T

RESPONSIBLE

NIGGEMANN_M

CHECKED

16.02.2011

HECKERT_M

APPROVED

LANGE_ST

R.PART NO.:

SCALE: 1/1

SUPERSEDES:

LP CH20M6

SPERRFLAECH FÜR ANSCHLUESSE
NON-USABLE AREA FOR CONNECTORS

PRODUCT FILE: CH20...

5670